

PRODUCT BROCHURE

## Sage Payroll

*Empowering start-up and small  
businesses with complete control  
over their payroll.*





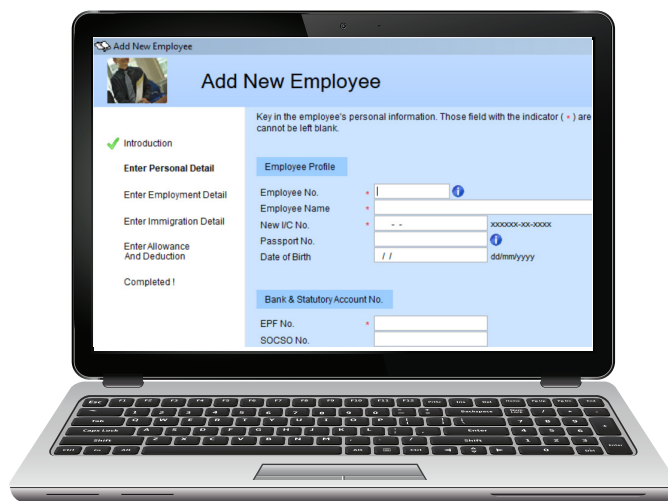
Easily manage  
your allowances,  
deductions, overtime  
and others in a  
single screen.





# Why Sage Payroll?

Increase productivity. Reduce costs.  
Streamline processes.



## Secured, Trusted and stable

Security of payroll information is critical for every organisation. Sage Payroll is a highly trusted solution which allows you to have complete control and visibility over your payroll, and helps ensure your payroll data is secure through User ID and Password Protection. Trust that your payments are safe, secure and controlled by authorisation processes and access rights.

## Meet your compliance requirements without stress

Sage Payroll provides a range of government reports and a variety of bank formats supported templates that are readily available, our local development team is keeping an eye on government rules and regulations changes and constantly enhance the solution to help to satisfy all compliance requirements as you grow your business.

## Empowering your employee

Taking care of your employees comes first. With Sage Payroll, you can securely store employee information, efficiently manage holidays and record custom absence types. Our solution streamlines processes and reduces time consuming tasks in managing employee information. It will provide more time to employees to be empowered to deliver greater results.

## Payroll made easy, pay your employee straight from the software

Sage Payroll allows complete control over your payroll. With an intuitive interface and navigation with logical work-flows, easily manage your allowances, deductions, overtime and others in a single screen.

Have the right documents completed error free, manage and track payments with ease and pay your employees straight from the software.

## Create your own work station anywhere anytime

From versatility to flexibility and convenience, Sage mobile license allows users to continue working anywhere, anytime; even when out of the office. Sage Mobile license allows you to 'take' your license with you and work remotely on any workstation outside the office. In a multi-user environment, other users can still continue to work on the system in the office as their licenses will not be affected at all.

## Help and support from the local experts

Even though our payroll software is easy to use, we understand you might need a helping hand every now and then. That's why Sage Payroll is backed by market-leading support, giving you access to our payroll experts by phone or email.

# Sage Payroll Features

## Quick Entry

View the total summary for each payroll entry before payroll processing and manage allowances, deductions and overtime in a single screen.

## Supported bank formats for your convenience

- AmBank for Salary & Statutory
- Public Bank for EPF
- Maybank for Tax, EPF, SOCSO
- OCBC Bank for Salary (Singapore)
- DBS Bank for Salary (Singapore)
- Other local banks

## 12 months Figure Update

View and approve changes made by users, increasing accountability and traceability on unauthorised changes, error and problem detection.

## Government Reports

- EIS forms
- SOCSO Borang
- LHDN reports
- Income Tax forms
- IRAS submission
- IR8A submission
- KWSP Borang A

## Wizard for Setup & Employee

Setup Wizard is made available during the initial setup with a step-by-step guide to set up necessary data in the system. Employee Wizard provide step-by-step guide to enter relevant information required for a new employee.

## Report insights

Understanding and managing your company's resource costings is made easy through summary reports of employee payslips..

## Director Fees

Able to be calculated as fixed or variable income via the Personnel File Maintenance setting.

## Integration with Sage UBS

Intuitive integration with Sage UBS or Sage 50cloud to manage your payroll in the most efficient way in your business.



## Features Matrix

Product	Number of employees
Payroll 15	15
Payroll 30	30
Payroll 60	60
Payroll 100	100
<b>System Management</b>	
Number of companies	Multi companies
Solution suite	Payroll with HRM
Add users	Yes
<b>Payroll Management</b>	
Calculate EPF, SOCSO, PCB	Yes
Manage allowances	Yes
Manage other deductions	Yes
Payroll generation	Yes
Simple process task flow	Yes
Year-end statutory filing documents	Yes
Keeping payroll records	Yes
HR admin templates	Yes
Staff claims (HRM)	Yes
Staff leave (HRM)	Yes
Tip/service point	Yes

# Sage Payroll protection with Sage Cover

We know how much you depend on your Sage Solution which is why we have made it easy for you to keep your system in top form with our software assurance plan, Sage Cover. The Sage Cover plan provides software updates, upgrades and information, giving you total investment protection in the long run.

With Sage Cover, you do not need to worry about keeping up to date with the latest version because it will be made available to you automatically. Each new version includes features that help your team maximize their productivity and performance. And best of all, it cost significantly less on an annual basis than sporadically purchasing new software licenses.

## Why do you need Sage Cover?

### **Stay compliant and improve productivity by keeping your product capabilities current**

Sage Cover ensures you receive the latest major software releases, security patches and bug fixes. The product are continually added and enhanced with new features and functionality to meet new challenges in your business. And that means you can rest assured you'll always have the current functionality to simplify your tasks.

### **Protect your software with the latest security upgrades and performance improved**

With Sage Cover, you are entitle to a full year of free upgrades where the upgrades are designed in order to address and fix issues encountered by users. These upgrades improve the overall performance and functionality of the software. Moreover, they enable the software to last longer by increasing its life cycle.

### **Manage your investment effortlessly and cost-effective**

Time is your most valuable asset, and how you leverage it can be critical to the success of your organization. That's why you wisely invested in our software, which delivers enormous time savings in business operations. With Sage Cover, you can continue to make the best use of your time while taking full advantage of product capabilities and the continual improvements we make. And guess what? Sage Cover secure you from price increase, no one promise you on no price increase in future.

### **Streamline your license management**

License keys are like passwords. You might have several of them and when you need to find one, it may not be obvious where to look. Sage Cover provides you with licensing assistance in case you need to request a new license key, transfer your license to a new machine. It's your one-stop shop for all things licensing.

### **Dedicated friendly support team with experts for fast answers on your product issues**

You can't afford to be without expert technical assistance through our highly experienced professionals who are committed to your satisfaction. Our partner network and/or support services ensure quick resolution to your product issues. Our support team operates from 9am to 6pm on weekdays.

# Frequently asked questions

**Q - Is Sage Payroll statutory compliant with LHDN and EPF?**

**A -** Yes, Sage Payroll is PCB latest and EPF latest compliant and it is certified with both statutory entities.

**Q - Can Sage Payroll manage monthly allowance and deductions for employees?**

**A -** Yes, Sage payroll can handle FIXED and VARIABLE allowance and deductions.

**Q - Can I print / email employee monthly pay-slip?**

**A -** Definitely, both print and email in PDF.

**Q - Can Sage Payroll track employee Leave and Claims?**

**A -** By using Sage Payroll Leave and Claims module that is included with the purchase of Sage Payroll.

**Q - Can I do multiple payroll payment in a month?**

**A -** Yes, with Sage Payroll there is option to run multiple payroll payments with different dates and times.

**Q - Does Sage Payroll support online banking for monthly employee salary crediting?**

**A -** Yes, Sage Payroll has a comprehensive and updated bank formats for Salary file generation.

**Q - How can I be sure that the payroll calculation in Sage Payroll is correct?**

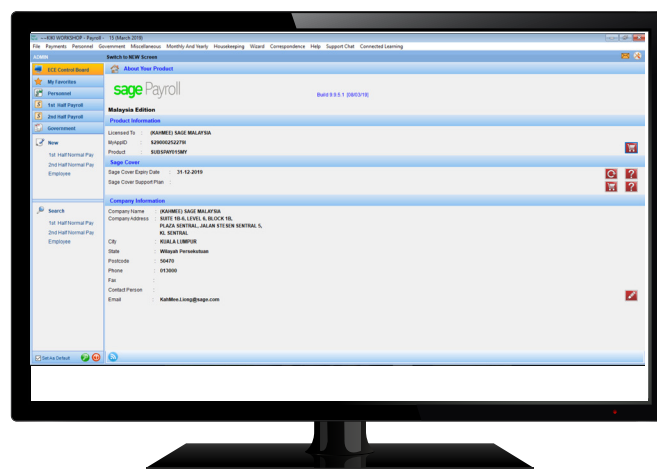
**A -** The standard pre-set setting in Sage Payroll is accordance to the basic statutory requirements.

**Q - Do you have any training classes?**

**A -** Yes, Monthly classroom training and personal on-site training is available.

**Q - If I have any enquiries about Sage Payroll and Sage Cover, who can I contact?**

**A -** Visit [www.sage.com/en-my](http://www.sage.com/en-my) or email to [enquiry.my@sage.my](mailto:enquiry.my@sage.my) or call 1-300-88-SAGE (7243)





Sage Software Sdn. Bhd.  
(441389-K)  
Suite 1B-6, Level 6, Block 1B,  
Plaza Sentral, Jalan Stesen Sentral 5,  
Kuala Lumpur Sentral,  
50470 Kuala Lumpur, Malaysia

+1300 88 7243

enquiry.my@sage.com  
SSB.Channel@sage.com

[www.sage.com/en-my](http://www.sage.com/en-my)

©2019 The Sage Group plc or its licensors. Sage, Sage logos, Sage product and service names mentioned herein are the trademarks of The Sage Group plc or its licensors. All other trademarks are the property of their respective owners. NA/WF 458103.

